

Advancing Practices in CCA at National, Local, and Sectoral Levels

31 January 2018

DISCOVERY SUITES HOTEL, Pasig City, The Philippines



Thailand's National Support Mechanisms

for Vertical Integration and Local Implementation of CCA plans and policy

Kollawat Sakhakara, Ph.D.

Environmental Official: Senior Professional Level

Climate Change Management Coordination Division

Office of Natural Resources and Environmental Policy and Planning

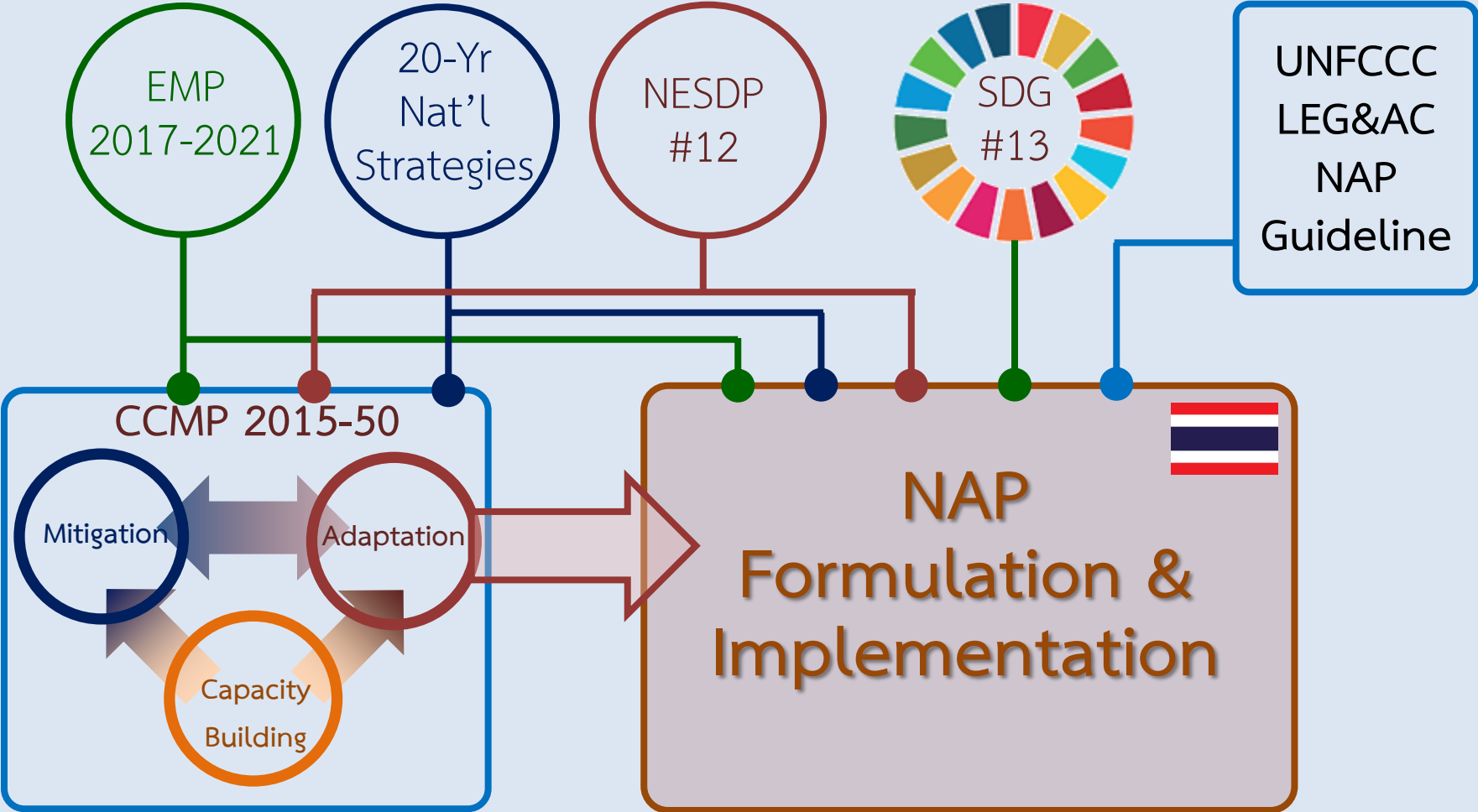
Ministry of Natural Resources and Environment



Contents

- Background of Thailand's CCA Plan and Policy
- NAP Formulation and Implementation of Thailand
- National Support Mechanisms

Background of Thailand's CCA Plan and Policy



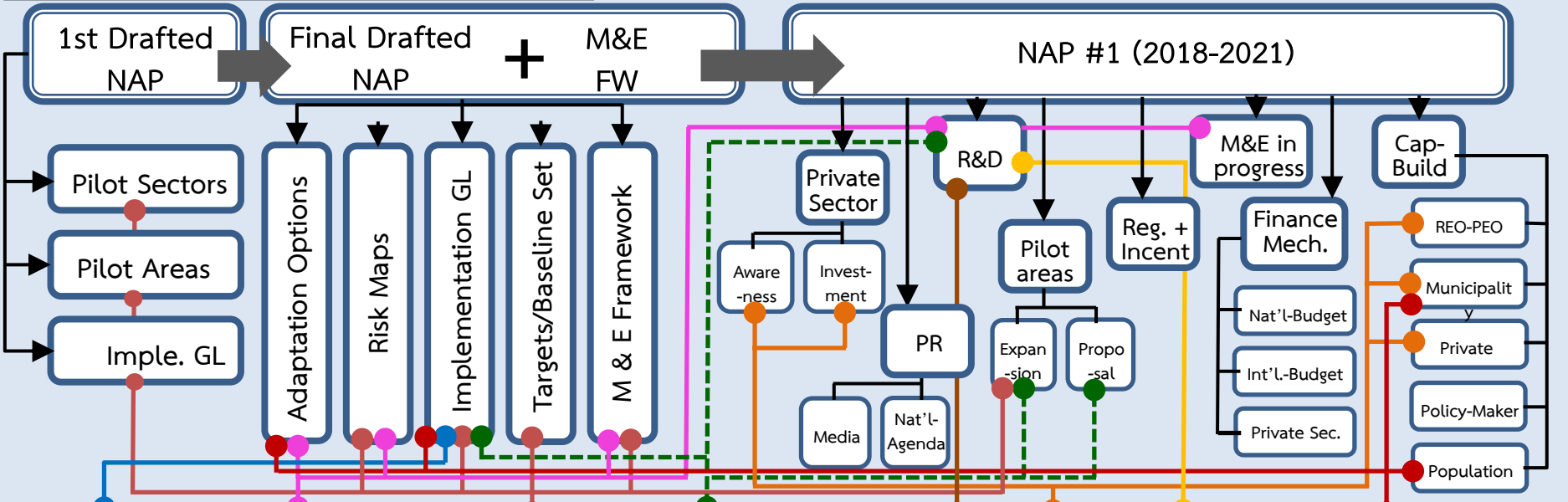
NAP Formulation & Implementation of Thailand



NAP Formulation & Implementation of Thailand



NAP Formulation Process 2015-17 **Approval 2018** **NAP Implementation Process 2018-21**



UNDP: CCBA
- Economic appraisal tools

JICA: ADAP-T
- 19 area-based research
- Databases and recommendation for policy makers
- Adaptation options

GIZ: Risk-NAP
- Pilot areas (4)
- Pilot sectors (3)
- Guideline for integration
- M & E system

UNDP: NAP-GCF
- Marine-Coastal database
- Pilot areas
- Adaptation options
- Project-based M&E

MOEJ-T-PLAT
- Local risk analysis
- Local Adaptation option
- Cap-Bldg of local Researchers

JICA-TGO: CITC
- Cap-build for PEO & REO
- Training program for municipalities

TRF(MOU)+NRCT
- Alignment of CC research' grant provision
- Disclosure of info and data
- Other academic supports

EU-GSEI
- Community-based training, awareness raising, and adaptation plans

National Support Mechanisms



(DRAFT)

N

A

P

National Board: NCCC, Sub-Coms, NWG

Local Mainstreaming (4 Pilot areas)

(4 Pilot areas)

1. Chiang Rai Province
2. Central Chao-praya river basin
3. Udon-tani Province
4. Andaman Cluster

Ministerial Policy

Integration

1. NAP-Ag
2. MOH



3. MOI
4. MOTS



National Financial Structure: TCP

ADAPTATION
IMPLEMENTATION



Thank you



Climate Change Management Coordination Division
Office of Natural Resources and Environmental Policy and Planning
Ministry of Natural Resources and Environment

Rama VI Rd. Samsane-nai, Preya-Thai district, Bangkok 10400 Thailand
Tel: 66 2265 6500 ext. 6784, 6842

ccmcpolicy@gmail.com
<http://climate.onep.go.th>